

HYDRAULIC INFRASTRUCTURES

AQUEDUCTS AND SEWERS

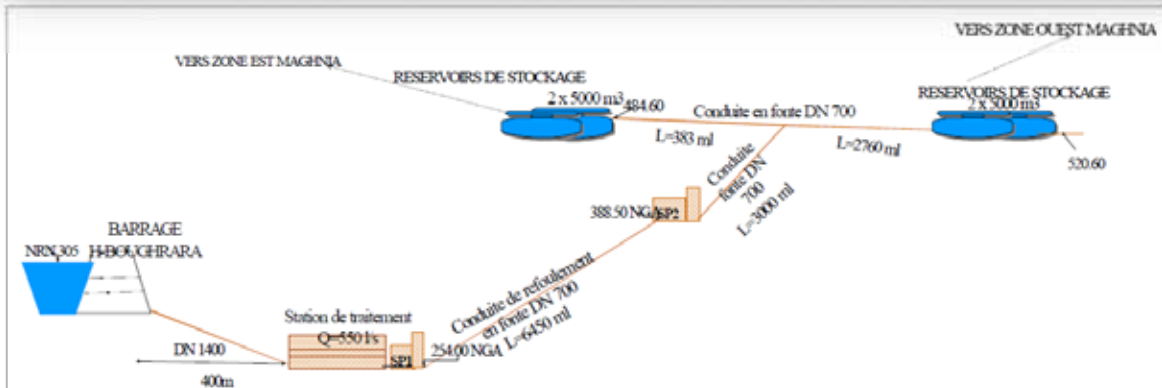
TITLE: FEEDING PIPELINE OF THE HAMMAM BOUGHRARA DAM TOWARDS THE CITY OF MAGHNA (ALGERIA).

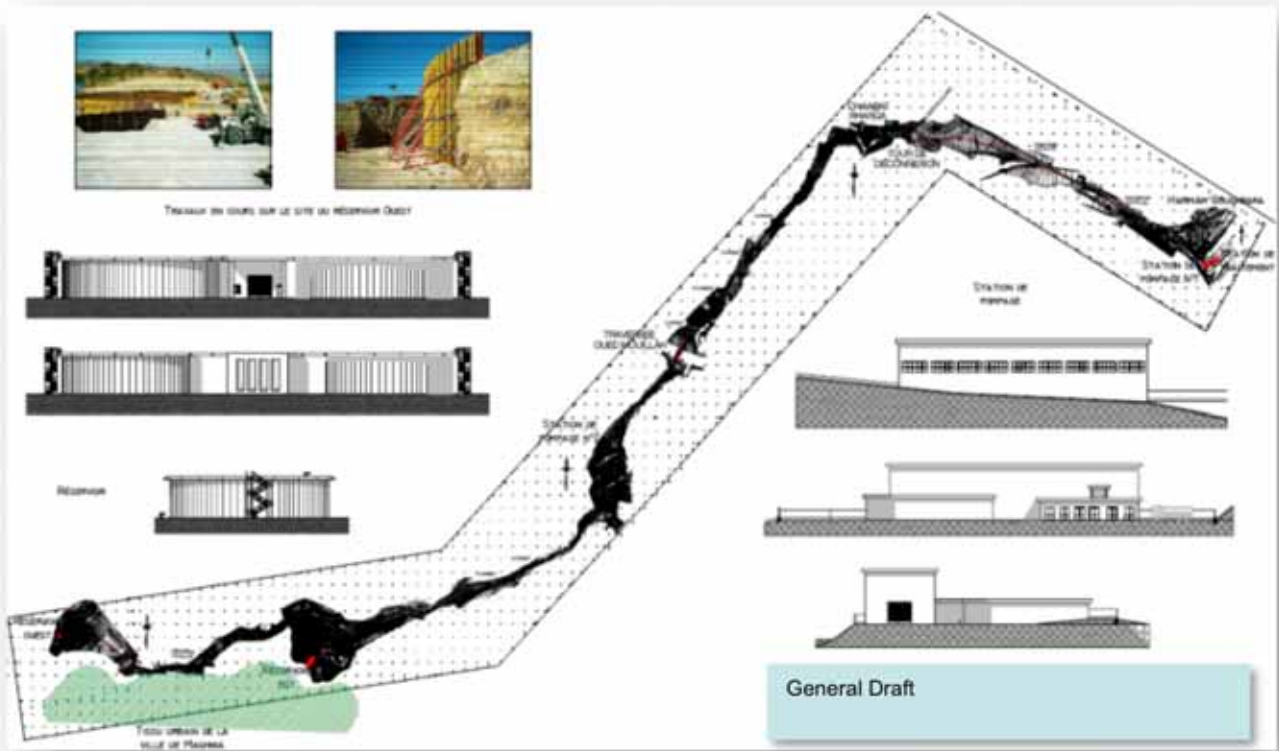
DESCRIPTION: the new feeding water system consists of a new pipeline (12km - DN700 ductile iron – 50000cm/d), starting from Hammam Boughrara Dam, towards Maghnia. The system is composed by two main reservoirs (20000cm total capacity) and two pumping station with balancing reservoirs (4000cm).

CUSTOMER: Società Italiana Condotte d'Acqua SPA – (Italy)

TOTAL AMOUNT OF WORKS: €23.799.001,10

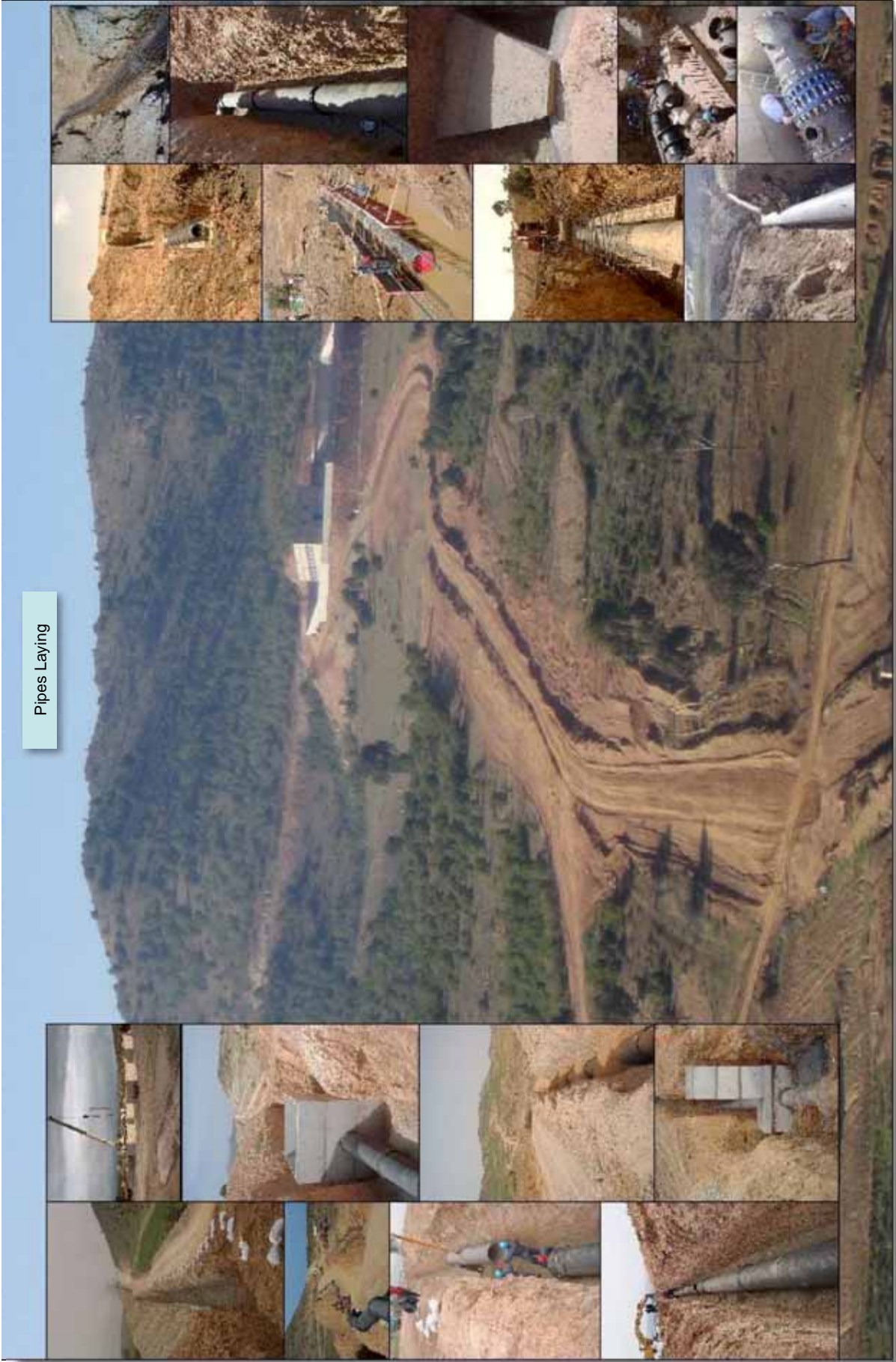
YEAR: 2005





Hydraulic Disconnection Tower, against Water Hammering





Pipes Laying





Pumping Station





Water Tanks 10.000 mc